

BOS Trading

# Summer Specials 2010

A2A2



*Ross Easterbrook*

Edenburg Toystory Lovely-ET VG-86, WF + JG Thompson, Mt Gambier, SA

Second Crop sensation CRITOYSTORY will be available at \$35.00 ex GST in 2010 and Sexed semen will be available for the first time. Look out for his Australian proof in April 2010!

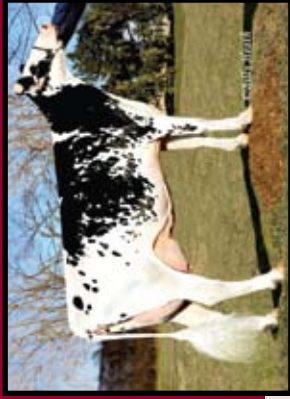
**SUMMER SPECIALS**  
valid for **Orders** placed from  
January '10 til 31<sup>st</sup> of March '10  
or whilst stocks last. Delivery by  
31<sup>st</sup> of October '10

your **ReliableProfit** partner™

Go to  
**WWW.BOSTRADING.COM.AU**  
for more information

RRP \$35.00

Summer Special Price \$18.00



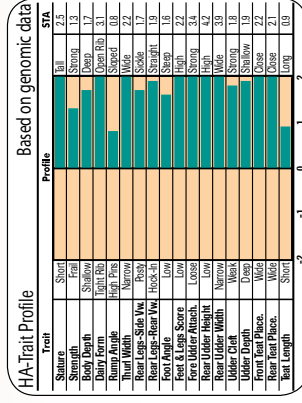
Dam: Brandt-View Shottle Farm-ET

## BOSHEFTY

Bolton x Shottle x Durham



USDA PTA 01/2010		HA-USA PTA 01/2010	
<b>Net Merit</b>	+\$517	95% ile	68%Rel
<b>Cheese Merit</b>	+\$494	67%Rel	
<b>Fluid Merit</b>	+\$534		
Daughters	G Herds	G	
<b>Milk</b>	+2152	71%Rel	
<b>Fat</b>	+76	-0.02%	
<b>Protein</b>	+53	-0.04%	
<b>Prod. Life</b>	+2.8	<b>SCS</b> +2.65	
<b>Type</b>	HA-USA PTA 01/2010		
<b>Udder Comp.</b>	+2.93	68%Rel	
<b>Feet &amp; Legs Comp.</b>	+1.70		
<b>TPI™</b>	+2086		
<b>Sire Calving Ease</b>	10%	78%Rel	
<b>Dau. Calving Ease</b>	10%	69%Rel	
<b>Sire Stillbirth</b>	8.0%	60%Rel	
<b>Dau. Stillbirth</b>	8.7%	60%Rel	
FERTILITY USDA, CRI 01/2010			
<b>Sire Fertility (SCR)</b>	+3.4		
<b>Dau. Pregnancy Rate</b>	-3.1	59%Rel	
<b>SynchSmart™</b>	+0.0		



RRP \$35.00

Summer Special Price \$18.00

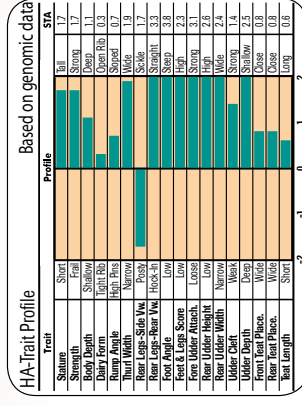


## BOSSEBASTIAN

Mac x Oman x Durham



USDA PTA 01/2010		HA-USA PTA 01/2010	
<b>Net Merit</b>	+\$712	99% ile	68%Rel
<b>Cheese Merit</b>	+\$758	67%Rel	
<b>Fluid Merit</b>	+\$675		
Daughters	G Herds	G	
<b>Milk</b>	+770	72%Rel	
<b>Fat</b>	+52	+0.09%	
<b>Protein</b>	+32	+0.04%	
<b>Prod. Life</b>	+6.8	<b>SCS</b> +2.91	
<b>Type</b>	HA-USA PTA 01/2010		
<b>Udder Comp.</b>	+2.20	68%Rel	
<b>Feet &amp; Legs Comp.</b>	+2.39		
<b>TPI™</b>	+2287		
<b>Sire Calving Ease</b>	5%	71%Rel	
<b>Dau. Calving Ease</b>	5%	65%Rel	
<b>Sire Stillbirth</b>	6.7%	60%Rel	
<b>Dau. Stillbirth</b>	5.6%	60%Rel	
FERTILITY USDA, CRI 01/2010			
<b>Sire Fertility (SCR)</b>	-1.6		
<b>Dau. Pregnancy Rate</b>	+2.5	59%Rel	
<b>SynchSmart™</b>	+2.5		



RRP \$35.00

Summer Special Price \$18.00

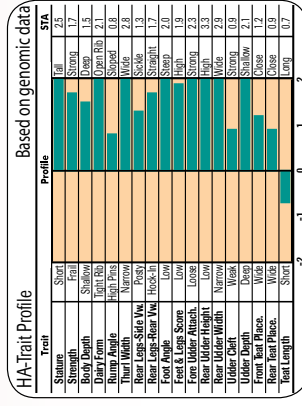


## BOSSHAMPOO

Shottle x Oman x Rudolph



USDA PTA 01/2010		HA-USA PTA 01/2010	
<b>Net Merit</b>	+\$715	99% ile	68%Rel
<b>Cheese Merit</b>	+\$762	68%Rel	
<b>Fluid Merit</b>	+\$668		
Daughters	G Herds	G	
<b>Milk</b>	+1230	72%Rel	
<b>Fat</b>	+77	+0.12%	
<b>Protein</b>	+43	+0.02%	
<b>Prod. Life</b>	+6.2	<b>SCS</b> +2.67	
<b>Type</b>	HA-USA PTA 01/2010		
<b>Udder Comp.</b>	+2.57	68%Rel	
<b>Feet &amp; Legs Comp.</b>	+1.62		
<b>TPI™</b>	+2296		
<b>Sire Calving Ease</b>	7%	83%Rel	
<b>Dau. Calving Ease</b>	7%	69%Rel	
<b>Sire Stillbirth</b>	7.7%	70%Rel	
<b>Dau. Stillbirth</b>	6.5%	60%Rel	
FERTILITY USDA, CRI 01/2010			
<b>Sire Fertility (SCR)</b>	+4.1		
<b>Dau. Pregnancy Rate</b>	+0.3	61%Rel	
<b>SynchSmart™</b>	+0.5		



RRP \$35.00

Summer Special Price \$18.00

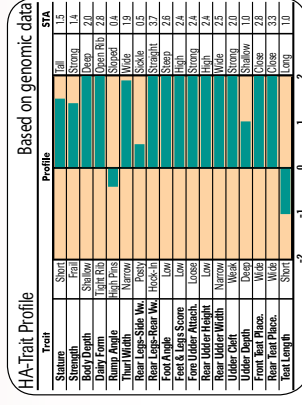


## BOSTOYCOLE

Toystory x Oman x Orion

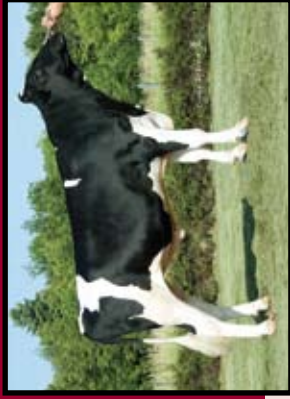


USDA PTA 01/2010		HA-USA PTA 01/2010	
<b>Net Merit</b>	+\$694	99% ile	68%Rel
<b>Cheese Merit</b>	+\$793	68%Rel	
<b>Fluid Merit</b>	+\$610		
Daughters	G Herds	G	
<b>Milk</b>	+1094	72%Rel	
<b>Fat</b>	+104	+0.24%	
<b>Protein</b>	+53	+0.08%	
<b>Prod. Life</b>	+3.0	<b>SCS</b> +2.80	
<b>Type</b>	HA-USA PTA 01/2010		
<b>Udder Comp.</b>	+2.40	68%Rel	
<b>Feet &amp; Legs Comp.</b>	+2.50		
<b>TPI™</b>	+2234		
<b>Sire Calving Ease</b>	7%	79%Rel	
<b>Dau. Calving Ease</b>	6%	69%Rel	
<b>Sire Stillbirth</b>	6.8%	60%Rel	
<b>Dau. Stillbirth</b>	7.4%	60%Rel	
FERTILITY USDA, CRI 01/2010			
<b>Sire Fertility (SCR)</b>	+3.5		
<b>Dau. Pregnancy Rate</b>	-0.2	60%Rel	
<b>SynchSmart™</b>	+1.0		



RRP \$35.00

Summer Special Price \$18.00

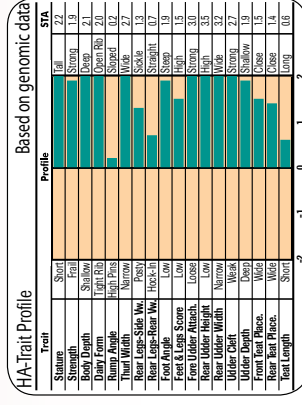


## BOSCOCOMO

Baxter x Lancelot x Trent



USDA PTA 01/2010		HA-USA PTA 01/2010	
<b>Net Merit</b>	+\$459	92% ile	67%Rel
<b>Cheese Merit</b>	+\$524	66%Rel	
<b>Fluid Merit</b>	+\$403		
Daughters	G Herds	G	
<b>Milk</b>	+147	71%Rel	
<b>Fat</b>	+56	+0.18%	
<b>Protein</b>	+19	+0.04%	
<b>Prod. Life</b>	+4.2	<b>SCS</b> +2.92	
<b>Type</b>	HA-USA PTA 01/2010		
<b>Udder Comp.</b>	+2.59	67%Rel	
<b>Feet &amp; Legs Comp.</b>	+1.24		
<b>TPI™</b>	+2004		
<b>Sire Calving Ease</b>	8%	71%Rel	
<b>Dau. Calving Ease</b>	7%	64%Rel	
<b>Sire Stillbirth</b>	6.9%	60%Rel	
<b>Dau. Stillbirth</b>	5.3%	60%Rel	
FERTILITY USDA, CRI 01/2010			
<b>Sire Fertility (SCR)</b>	+1.2		
<b>Dau. Pregnancy Rate</b>	+0.0	57%Rel	
<b>SynchSmart™</b>	NA		



Dau Fert Cell Count Type

RRP \$60.00 2 Bull Combo \$40.00 3 Bull Combo \$35.00

NASIS: 80FFA67 • Bull Id: BOSCHSUPER • BOLIVER X O MAN X JUROR

U.S. PRODUCTION 01/2010

Charlesdale **SUPER**stition-ET \*TV

TPI	2224	LNM\$	670
MILK	1528		
PROT	46		0.0%
FAT	28		-0.1%
DAU	99	HERDS	52
WORKABILITY & HEALTH TRAITS			
	SCS		121
	SEMEN FERT		+4.4
	DAU FERT		+2.0
C.E.	7%	PROD LIFE	6.8
ABVi 01/2010			
APR	50	ASI	29
MILK	899	Rel %	61%
PROT	19		-0.09%
FAT	-1		-0.57%
Overall Type	109	Mammary	110

- #1 Sire of Sons Worldwide
- Appealing Type and outstanding Fitness

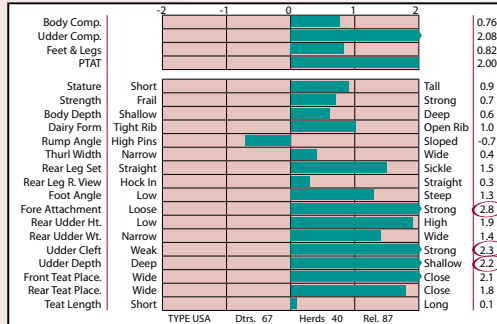
SIRE END-ROAD PVF BOLIVER-ET  
DAM CHARLESDALE SWEET STAR, VG-85, VG-MS, DOM  
1-10 3x 365d 33,740m 3.3 1106f 3.1 1058p lbs.



North Harbor Super 2203



Martin Super 1024



Longevity Calving Ease Outcross

RRP \$60.00 2 Bull Combo \$40.00 3 Bull Combo \$35.00

NASIS: 80FFA50 • Bull Id: BOSFREDDIE • O MAN X DIE-HARD X METRO

U.S. PRODUCTION 01/2010

Badger-Bluff Fanny **FREDDIE** \*TV

TPI	2313	LNM\$	824
MILK	1136		
PROT	43		+0.03%
FAT	57		+0.06%
DAU	70	HERDS	39
WORKABILITY & HEALTH TRAITS			
	SCS		151
	SEMEN FERT		+0.7
	DAU FERT		+3.1
C.E.	6%	PROD LIFE	7.6
ABVi 01/2010			
APR	99	ASI	66
MILK	1009	Rel %	58%
PROT	25		-0.04%
FAT	22		-0.30%
Overall Type	106	Mammary	105

- Industry-leading LNM\$
- Our leader for Productive Life

A2A2

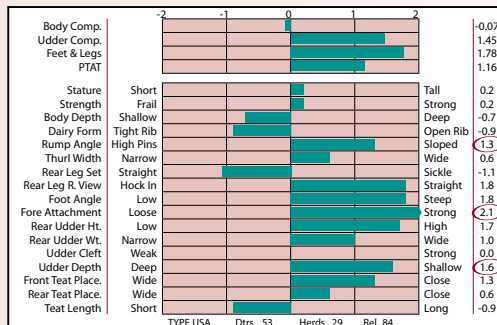
SIRE O-BEE MANFRED JUSTICE-ET  
DAM BADGER-BLUFF FLO FANNY-TW, VG-86, VG-MS  
3-10 2x 305d 39,320m 3.4 1352f 3.0 1163p lbs.



Dorrich Freddie 1650



Schmidts Ponderosa Freddie 4660



Dau Fert Calving Ease Type

RRP \$60.00 2 Bull Combo \$40.00 3 Bull Combo \$35.00

NASIS: 80FFA65 • Bull Id: BOSCRICKET • O MAN X DURHAM X JUROR

NLD PRODUCTION 01/2010

Ralma O-Man Cf **CRICKET**-ET

NVI	146	INET	68
MILK	967		
PROT	29		-0.05%
FAT	6		-0.40%
DAU	135	HERDS	116
WORKABILITY & HEALTH TRAITS			
M.S.	102	SCS	180
TEMP	103		
	DAU FERT		101
C.E.	110	LONGEVITY	471
ABVi 01/2010			
APR	81	ASI	40
MILK	674	Rel %	69%
PROT	19		+0.01%
FAT	2		-0.38%
Overall Type	108	Mammary	108

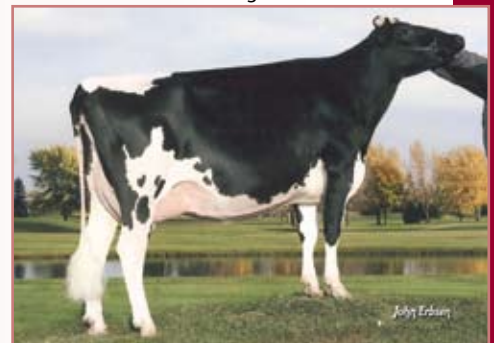
- O Man's #1 Type son
- Extreme Cell Count and Calving Ease

A2A2

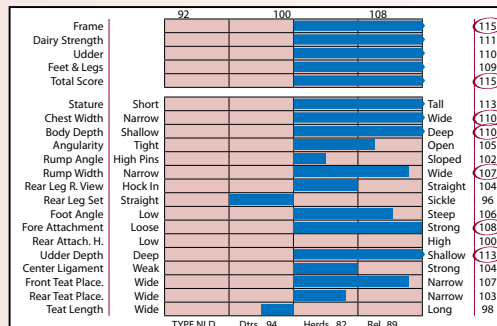
SIRE O-BEE MANFRED JUSTICE-ET  
DAM RALMA CHRISTMAS FUDGE VG-88  
2.0 yr 12,433M 398P 3.2%P 510F 4.1%F (Kgs.)



Cricket Daughter 6792



Ralma Christmas Cookie, Full sister to Cricket



(Even numbers of 2 or 3 bulls required in the combo, no minimum or maximum)

SIRE OF SONS TEAM

## BOS PROTEIN BREEDS – 20% discount on all individual sires



Raster Zaster Rina

The BOS TRADING Type Sensation **CRIZASTER** (*Zoldo x Jetway*) has dominated the August 2009 Italian proofs by more than doubling daughters numbers & becoming the Number 1 Mammary System (142) & Equal Number 1 Type (130) Brown Swiss Sire. As a Second Crop Star, now with 148 daughters in production, ZASTER has cemented himself as a true breeding great. ZASTER daughters excel for Rear Udder Height (139) & Width (129), they have excellent milk flow (1018), superior longevity (108), and fast milking speed (106). The first daughters have calved in Australia.

**BOSINDIANO** (*Ace x Prelude x Prophet*) is one of Australia's biggest selling Brown Swiss Sires. He is the leading 'Ace' son available boasting balanced indexes for Overall Type (125), Udders (122) & Production (1027). INDIANO daughters exhibit tremendous body length, excellent udder quality, great rear udder height (120) & width (121), and have very correct rump structures. They also offer breeders the breeds best genetics for milking speed (110), cell count (117) & longevity (117).



Drinkall Gratitude Class

An Excellent 'NEW' sire has emerged in 2009, **PLACIDO** (*Pronto x Jetway*). This newly proven PRONTO son holds a balanced proof, with Excellent Udders (125), Great Feet & Legs (121) & a Balanced Type Pattern (119). PLACIDO excels for milking speed (127) & rear udder height (131), so be sure to keep an eye out for this exciting sire in 2010.

**BOSGANNON** has been one of Australia's most used Jersey sires in 2009 and going by the reactions from farmers with calves on the ground his popularity will continue in 2010. Additional daughters confirmed his outstanding figures in 2009 and the calves on the ground confirm his excellence as the strength and width Jersey bull in the industry. His high semen quality resulted in many happy customers both conventional and Sexed!

## Summer Special – 150+ VOLUME DISCOUNTS

Back by popular demand is the Volume Discount which offers the following:

- Orders of 150+ doses (*any combination of product*) will attract a 30% discount off the standard RRP as listed in our 2009-10 Directory;
- All bulls from our 2009-10 BOS Directory qualify with the exception of Sexed semen and other individual Summer Specials as listed above;
- All Volume Discount orders need to be placed by 31st of March 2010 but don't have to be paid till product is required (*at the latest 31st of October 2010*);
- Volume Discount orders can be split over separate deliveries (*Autumn and Spring joining*).

The Volume Discounts offer unprecedented savings on some of our most popular bulls for example:

- Get access to our most popular sire **NLDOLYMPIC** for \$ 21.00 ex.
- Buy Component Specialist and Sire of Sons **BOSBERTIL** at \$ 31.50 ex.
- Jersey sensation **BOSGANNON** at \$ 24.50 ex.



BOSBERTIL Cato 417

All prices quoted are exclusive of GST

your **ReliableProf** partner™



**BOS Trading**

2/22 Garden Drive, Tullamarine, Victoria 3043  
e-mail: info@bostrading.com.au  
Tel: 03 9335 3499 • Fax: 03 9335 4199  
Peter van Elzakker • Mobile: 0409 276 972

Stewart Mancer, Northern Victoria and S.A.  
Tim Weller, Northern Victoria, Riverina NSW  
Kerrie Harman, Gippsland  
Mike Huth, Western District SA and Queensland  
Coleman Baulch, Western District, W.A.

Ph: 0409 003 069  
Ph: 0408 126 958  
Ph: 0409 000 243  
Ph: 0409 555 042  
Ph: 0409 012 235